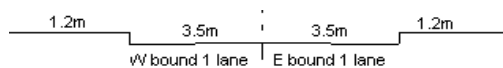
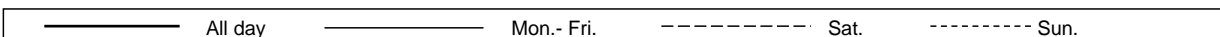
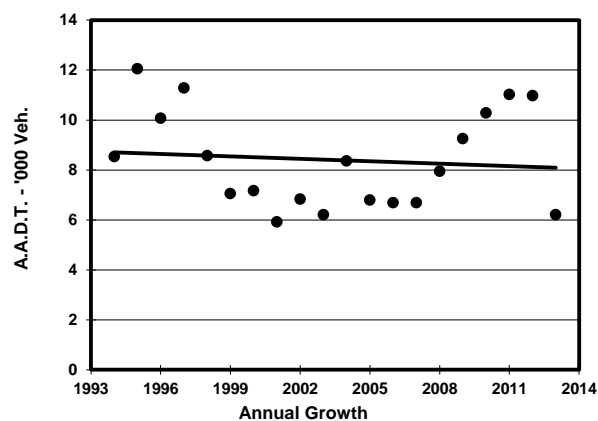
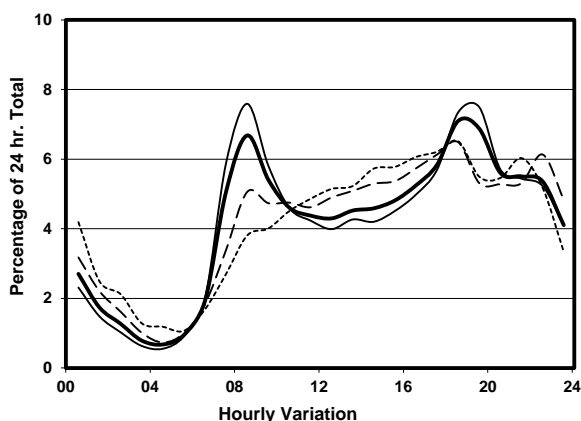
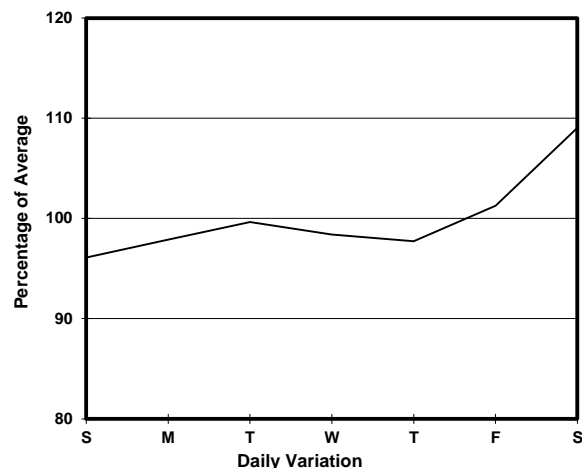
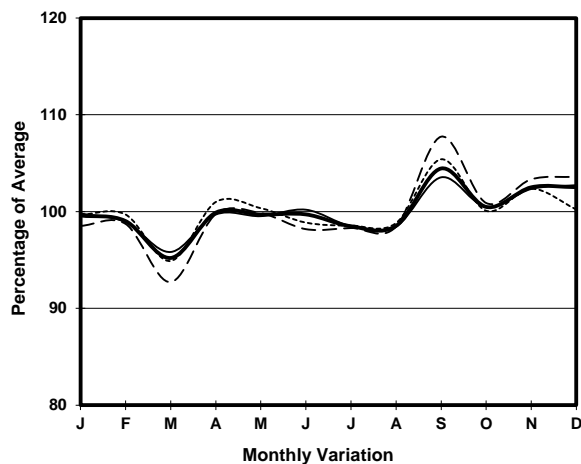


YEAR 2013
 COVERAGE (B) STATION 6209
 ROAD NETWORK MAJOR
 ROAD TYPE RURAL ROAD

LINK CASTLE PEAK RD - TSUEN WAN, TING KAU & SHAM
 TSENG (from TUEN MUN RD to SHAM TSENG)



1. TRAFFIC FLOW VARIATION AND GROWTH



2. TRAFFIC CHARACTERISTICS (BY DIRECTION)

Parameter	All - Day	Mon. - Fri.	Sat.	Sun.
EAST BOUND				
A.A.D.T.	2960	2960	3140	2830
R 12 / 24 - %	66.1	67.3	63.1	62.5
R 16 / 24 - %	84.6	85.7	82.2	81
AM Peak Hour	0800-0900	0800-0900	0800-0900	0900-1000
One-way flow at AM peak hour	270	310	210	140
T - % (AM)	-	14.5	-	-
PM Peak Hour	1800-1900	1700-1800	1700-1800	1800-1900
One-way flow at PM peak hour	150	150	160	180
T - % (PM)	-	8.5	-	-
Prop.of commercial vehicles - 16 hr.	-	9	-	-
WEST BOUND				
A.A.D.T.	3250	3200	3640	3140
R 12 / 24 - %	59.4	59.3	60.3	58.8
R 16 / 24 - %	87.2	88.2	84.9	84.3
AM Peak Hour	0800-0900	0800-0900	0900-1000	0900-1000
One-way flow at AM peak hour	150	160	130	100
T - % (AM)	-	19.1	-	-
PM Peak Hour	1800-1900	1800-1900	1800-1900	1600-1700
One-way flow at PM peak hour	290	310	280	220
T - % (PM)	-	3.2	-	-
Prop.of commercial vehicles - 16 hr.	-	8.9	-	-

3. OTHER INFORMATION AND COMMENT

4. Vehicle classification and occupancy - Monday to Friday

Time		Class of vehicle									
		Motor Cycle	Private Car	Taxi	Private LB	PLB	Goods veh.		Non Fr. Bus	Fr. Bus	
							Light	M & H		SD	DD
0700-0800	Pro	4.3	25.9	10.1	4.3	20.9	13.0	2.9	15.9	0.9	1.8
	Ocp	1.0	1.3	2.1	7.3	14.1	1.9	1.0	11.8	18.0	22.8
0800-0900 Peak hour	Pro	2.0	41.4	9.7	2.6	16.3	11.8	4.1	10.2	0.9	1.0
	Ocp	1.0	1.4	1.9	6.2	9.9	1.7	1.0	13.6	20.9	17.9
0900-1000	Pro	1.5	46.0	16.4	1.5	13.3	11.8	3.6	4.1	0.8	1.0
	Ocp	1.0	1.7	1.7	3.3	12.0	1.7	1.7	6.0	16.0	17.6
1000-1100	Pro	1.6	37.3	17.5	0.0	15.9	17.5	4.0	4.0	1.0	1.4
	Ocp	1.0	1.6	1.8	0.0	12.4	1.5	1.2	17.2	11.6	19.4
1100-1200	Pro	0.9	42.3	11.3	2.8	13.1	20.7	3.8	2.8	0.9	1.4
	Ocp	1.0	1.5	1.7	1.3	11.6	1.5	1.3	7.7	13.3	16.7
1200-1300	Pro	1.0	43.4	10.3	5.2	13.4	14.5	3.1	6.2	1.3	1.6
	Ocp	1.0	1.9	1.9	5.8	16.4	1.8	1.3	17.5	14.8	26.8
1300-1400	Pro	2.2	33.3	19.4	2.2	15.1	21.5	0.0	3.2	1.6	1.6
	Ocp	1.0	1.7	1.9	2.5	14.9	1.6	0.0	8.0	15.7	20.0
1400-1500	Pro	3.0	40.6	8.9	1.0	17.8	15.8	5.9	3.0	1.5	2.5
	Ocp	1.0	1.8	1.3	3.0	12.2	1.8	1.2	5.3	19.5	15.9
1500-1600	Pro	3.4	35.2	11.7	10.1	9.2	16.8	5.0	5.9	1.0	1.7
	Ocp	1.0	1.5	1.6	10.4	10.6	1.5	1.5	12.7	16.2	21.0
1600-1700	Pro	1.4	45.7	7.0	4.9	12.7	16.9	2.8	6.3	0.9	1.4
	Ocp	1.0	1.5	2.3	2.7	13.1	1.7	1.3	6.4	15.8	27.5
1700-1800	Pro	3.3	44.0	12.7	2.7	14.7	14.0	1.3	5.3	0.5	1.5
	Ocp	1.0	1.6	1.8	1.8	13.7	1.8	1.5	4.9	17.3	26.6
1800-1900	Pro	5.0	57.9	13.2	0.0	15.4	3.3	0.0	3.3	0.8	1.1
	Ocp	1.0	1.8	2.7	0.0	14.1	1.3	0.0	7.5	16.0	37.1
1900-2000	Pro	2.6	56.5	19.1	0.4	16.2	3.0	0.0	0.9	0.6	0.7
	Ocp	1.2	1.6	1.8	1.0	12.9	1.4	0.0	1.5	17.0	37.3
2000-2100	Pro	3.1	52.9	14.2	0.0	20.8	4.1	0.0	3.6	0.5	0.9
	Ocp	1.3	2.0	1.7	0.0	10.3	2.1	0.0	18.1	18.8	40.3
2100-2200	Pro	6.8	36.5	23.6	0.0	25.7	2.7	0.0	2.7	1.0	1.0
	Ocp	1.0	1.8	1.6	0.0	9.6	2.0	0.0	8.8	13.0	21.0
2200-2300	Pro	2.4	41.7	25.6	0.0	23.2	4.2	0.6	0.6	0.7	0.9
	Ocp	1.3	2.0	1.5	0.0	11.3	2.0	2.0	20.0	13.2	10.8
16 hours	Pro	2.8	43.9	14.8	2.0	16.8	10.7	2.1	4.8	0.9	1.3
	Ocp	1.1	1.7	1.8	5.7	12.1	1.7	1.3	11.0	16.2	23.7

Legend

Pro. Proportion of vehicles in % (Sum may not add up to 100% due to figure rounding)
Ocp. Average occupancy of vehicles
M&H Medium and Heavy